

Anatomy of a Stylesheet Transformation

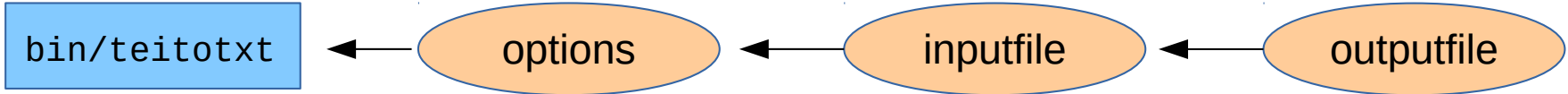
(Stop me when your head hurts.)

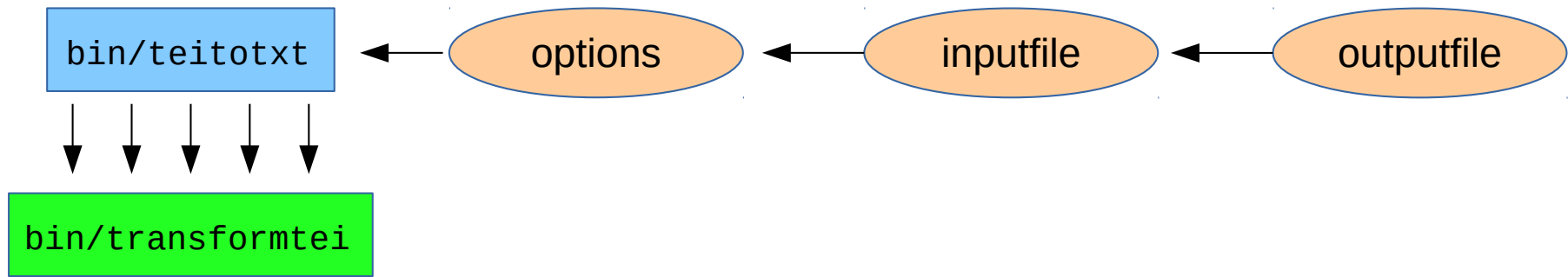
bin/teitotxt

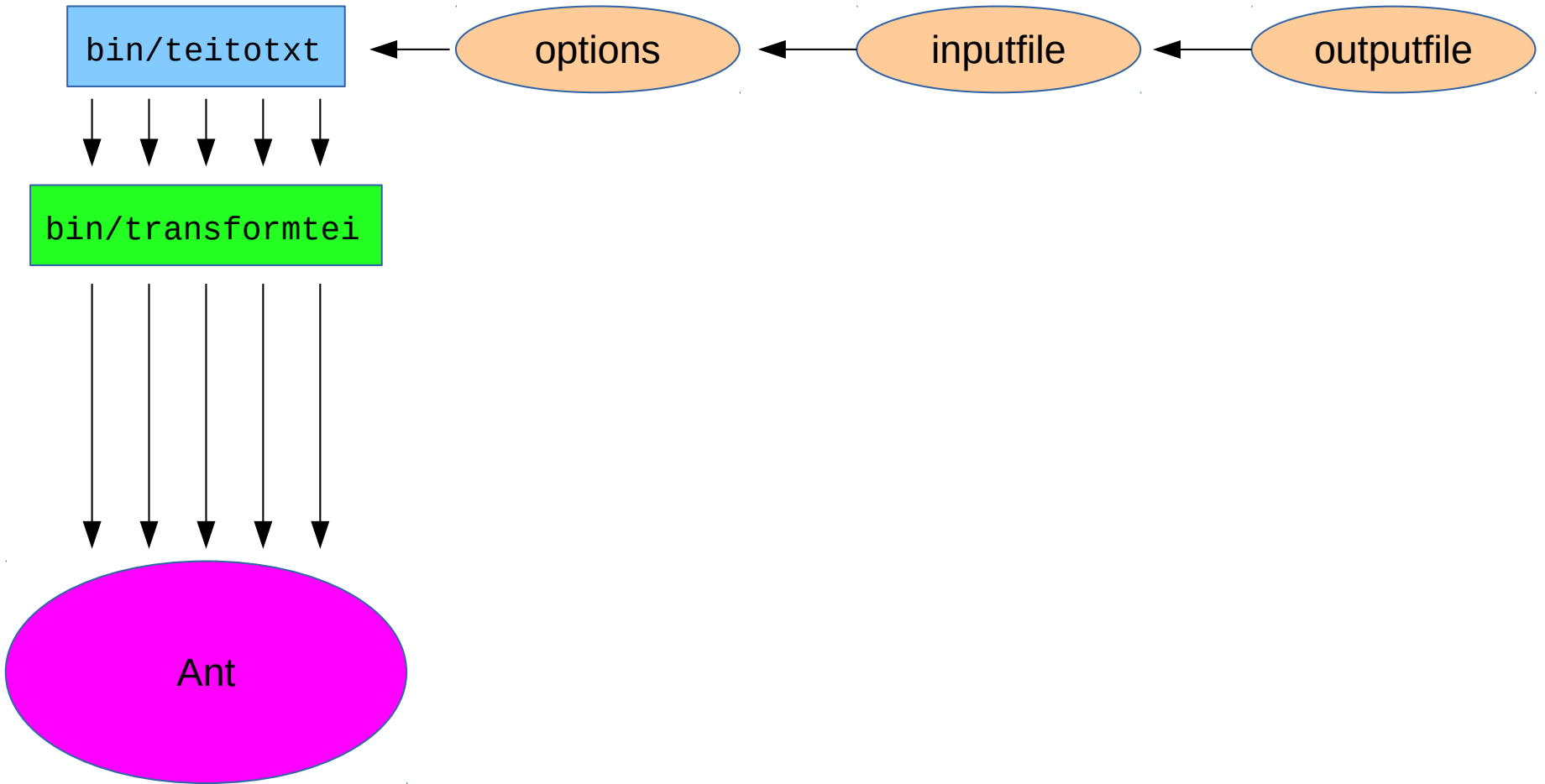
bin/teitotxt

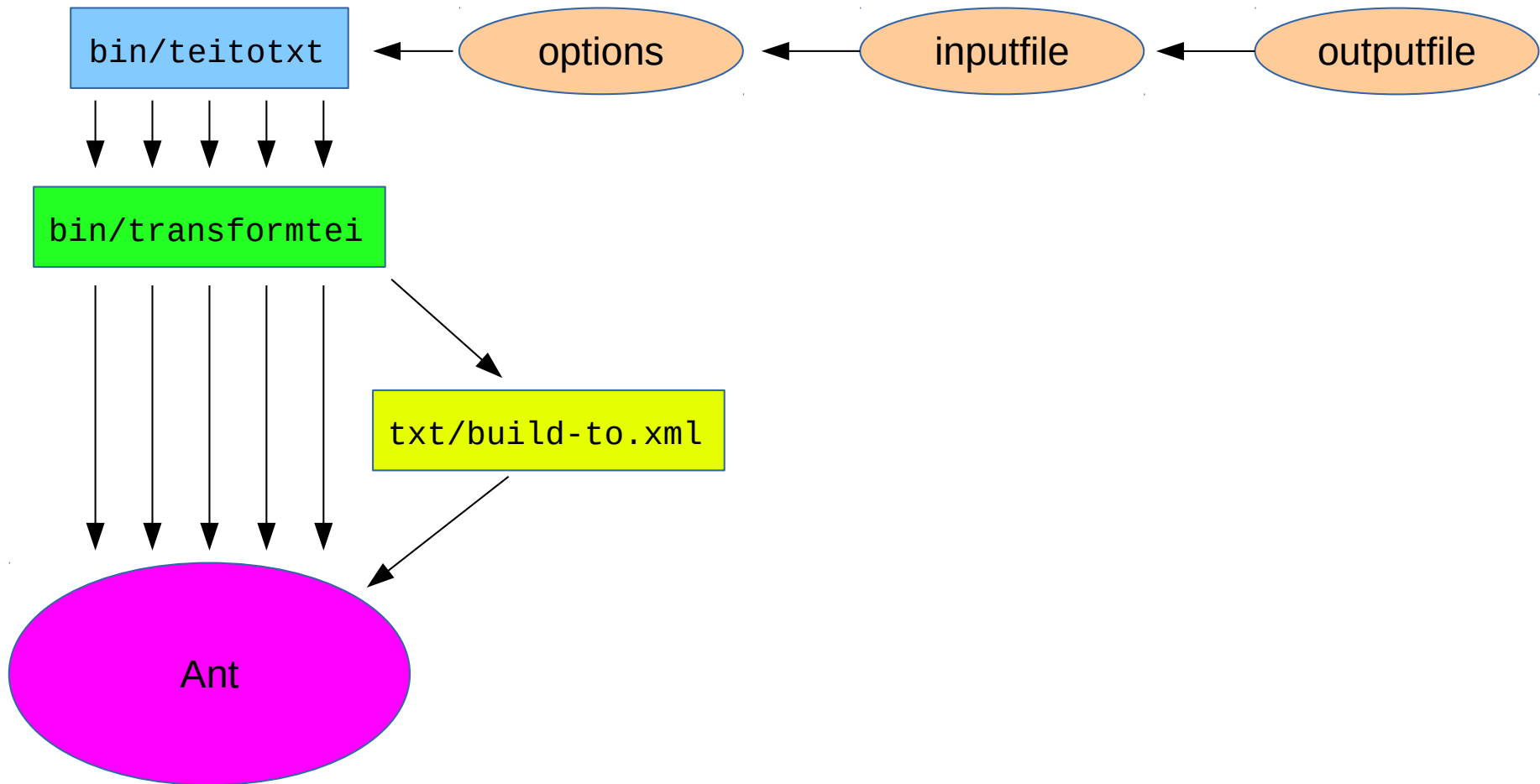


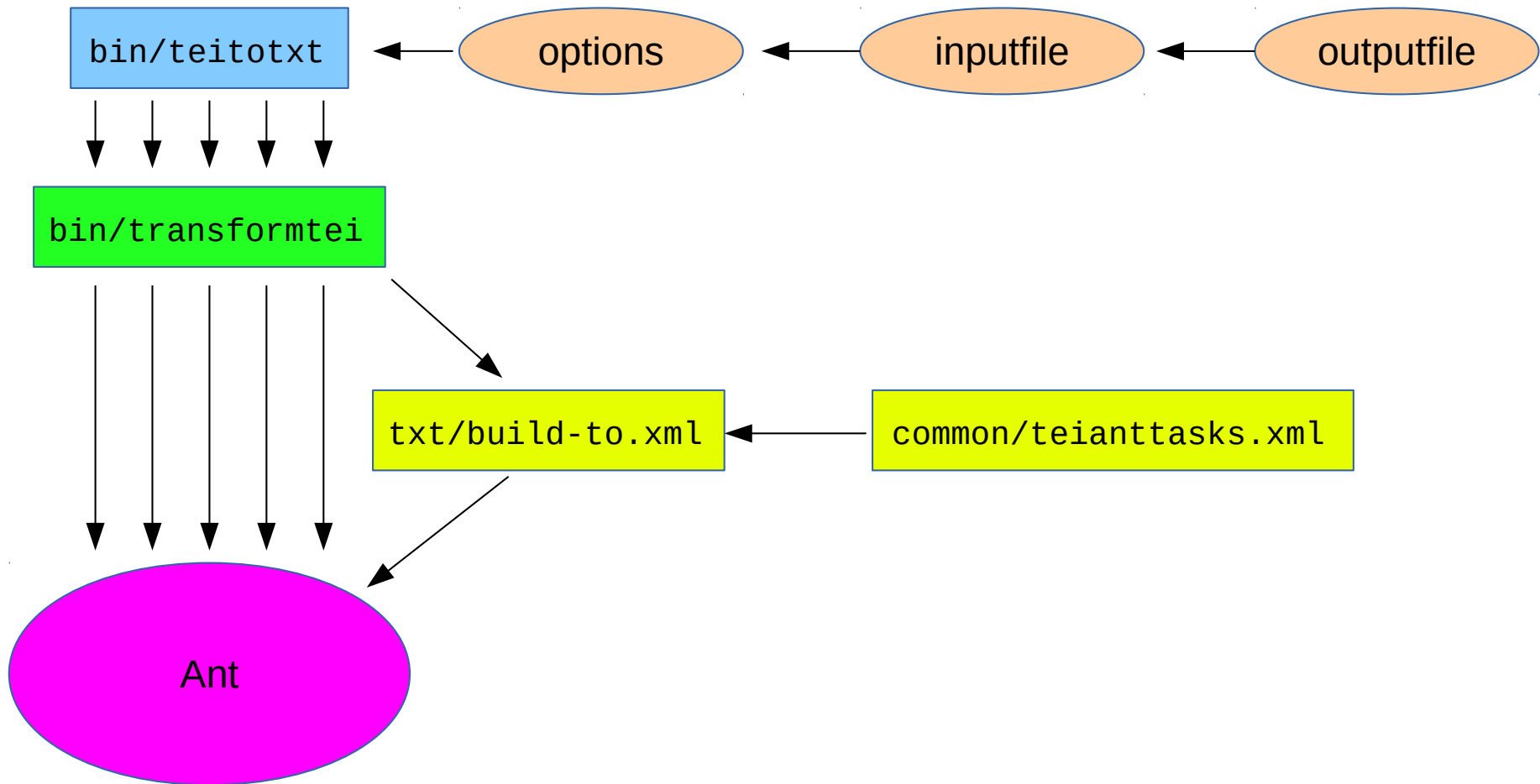
options

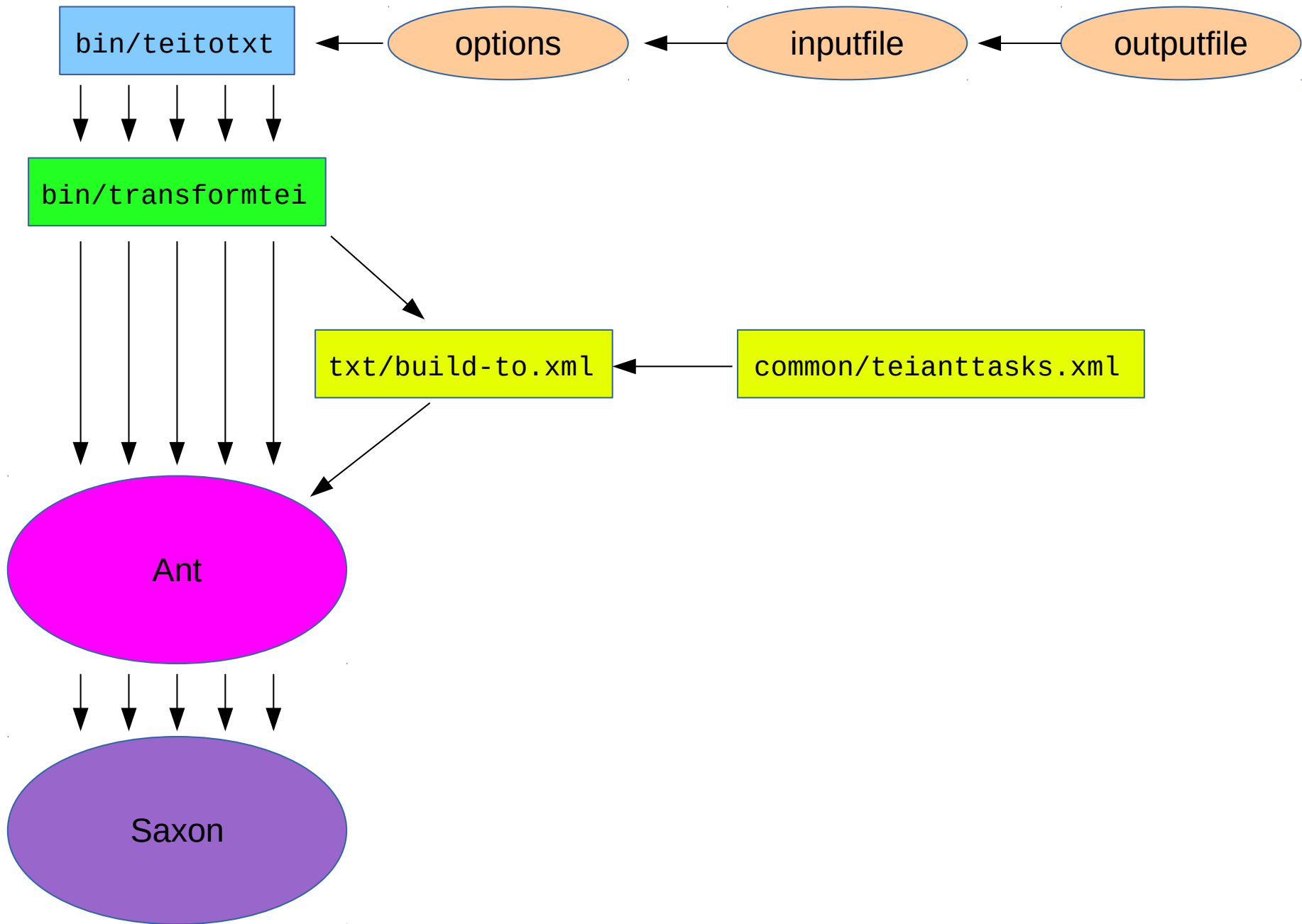


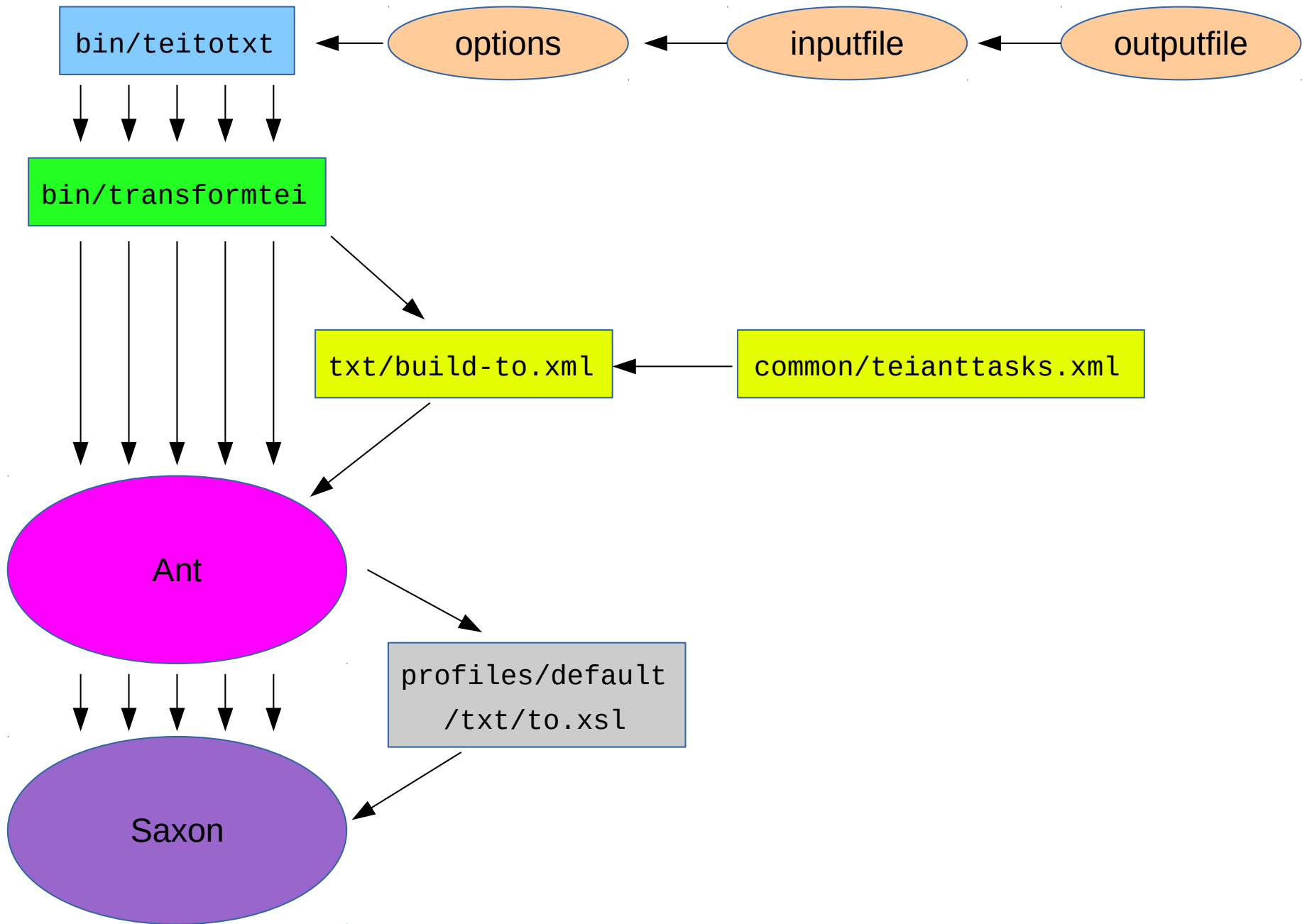


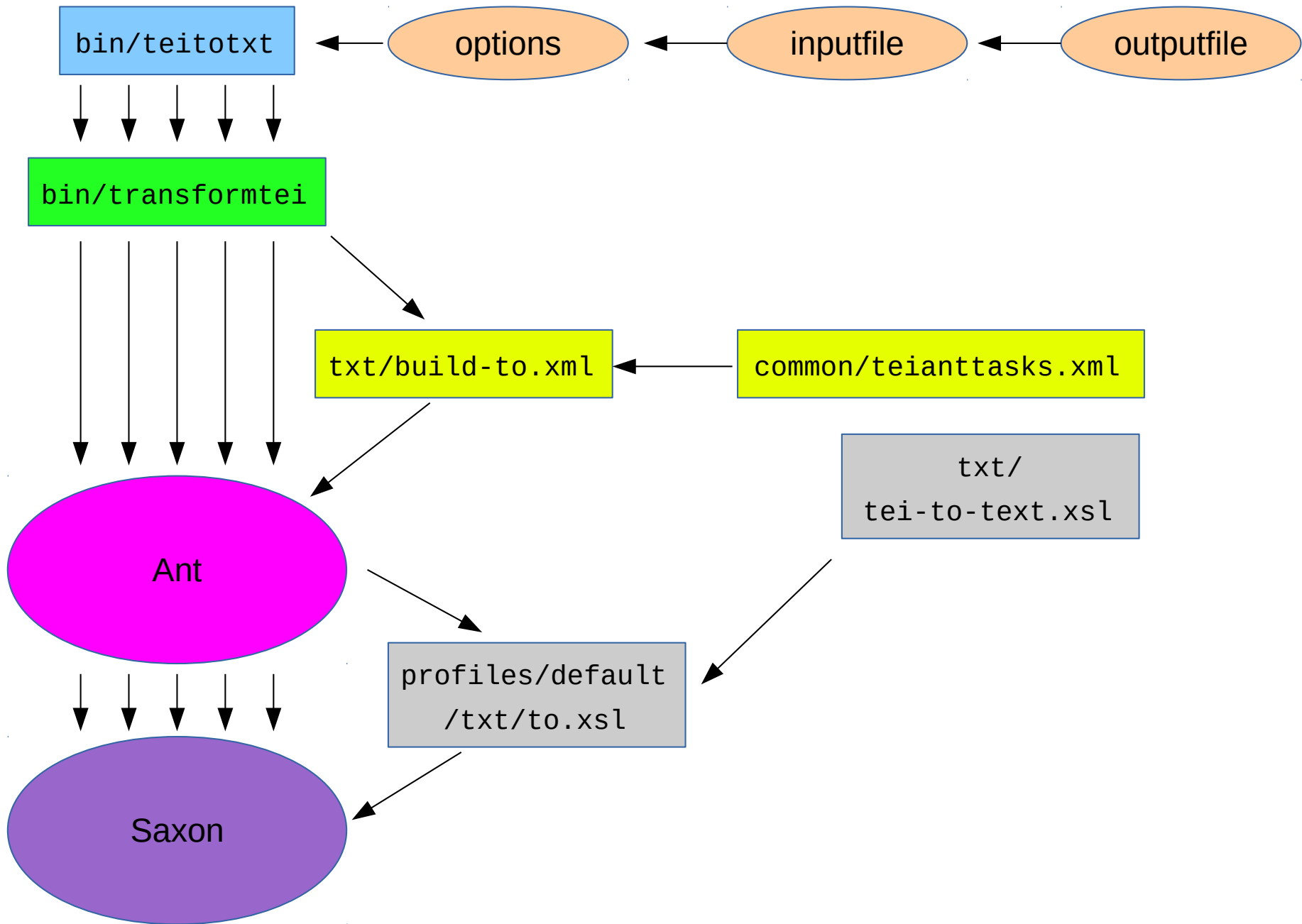


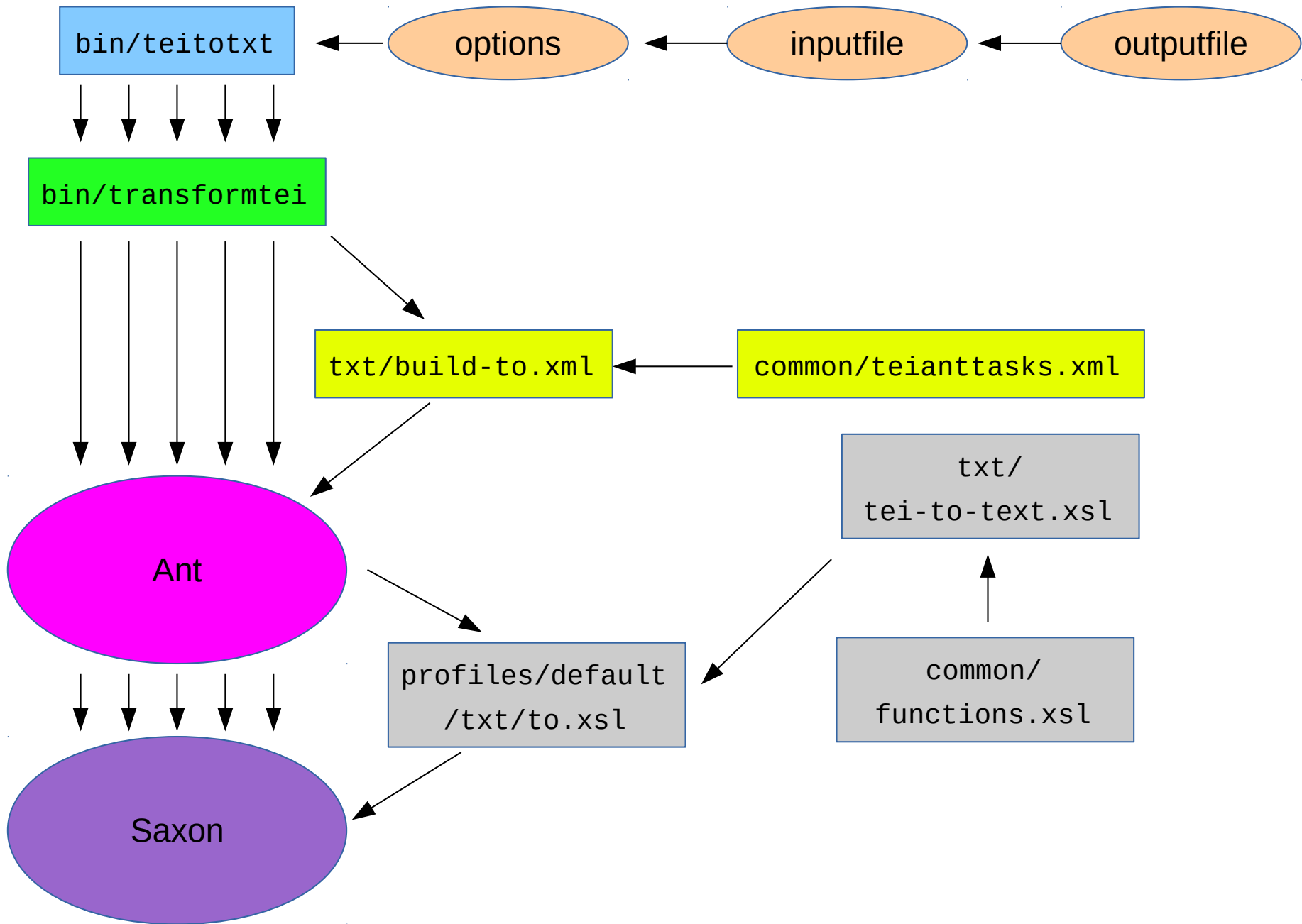


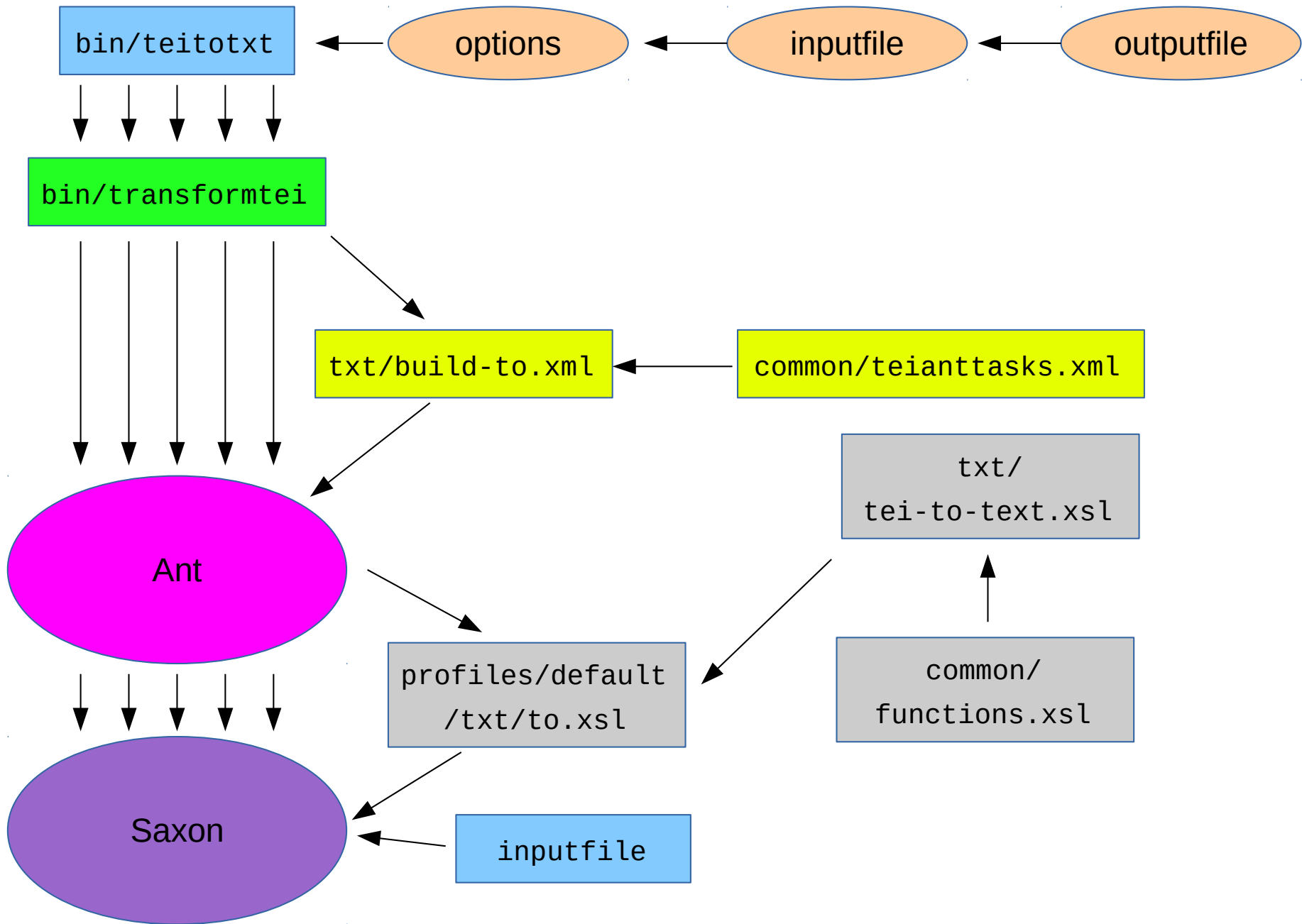


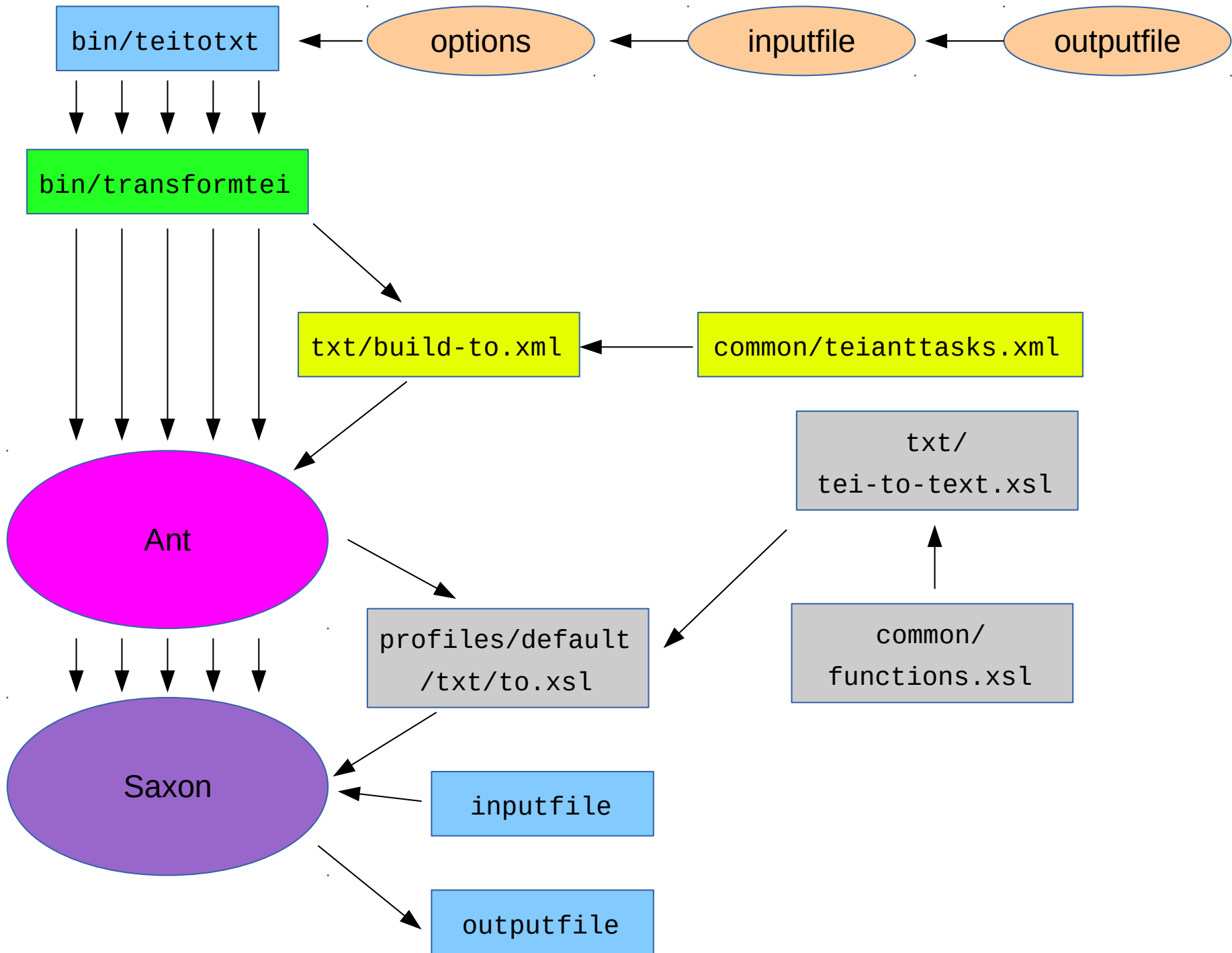












How a parameter is passed

- **--odd** ⇒ bin/teitotxt
- ⇒ bin/transformtei
- ⇒ (as **-DodD**) ⇒ ant
- ⇒ (txt/build-to.xml ⇒) common/teianttasks.xml
- ⇒ (as **processOdd**) ⇒ txt/build-to.xml
- ⇒ (via call to **odd2odd** macro) ⇒
common/teianttasks.xml